

1 CONDO UNIT 601
 SQUARE FOOTAGE: 2586 SF
 DECK SQUARE FOOTAGE: 450 SF

NOT FOR CONSTRUCTION

DRAWN BY: <u>SNJ</u>	APPROVED BY: <u>AMV3</u>
DATE: <u>09/19/2016</u>	

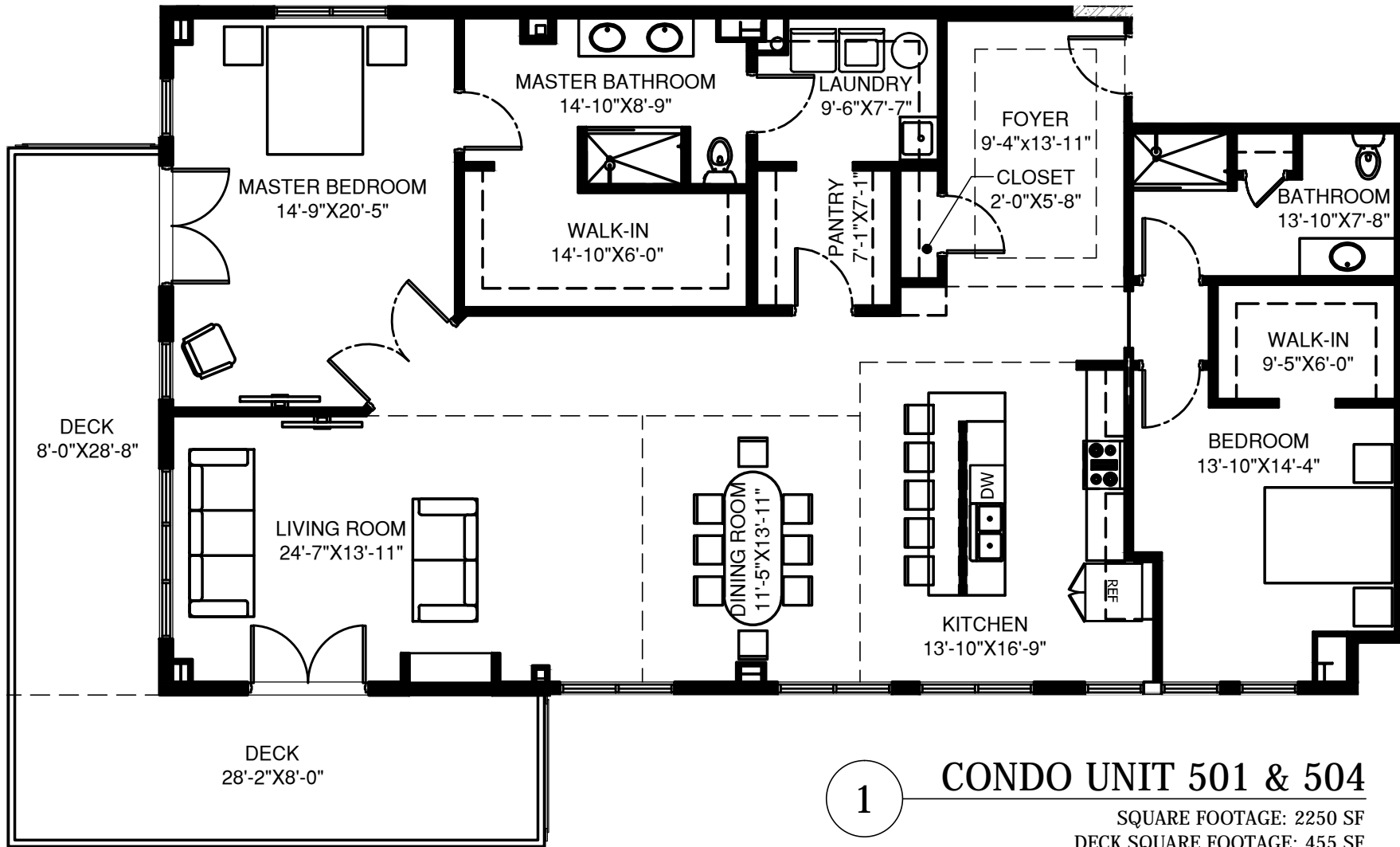
NO.	REVISION DESCRIPTION	APPROVED	DATE

Ament
DESIGN

Ament Design
625 32nd Ave SW
Cedar Rapids IA 52404
ph. 319-378-1401
fax 319-378-1975

ENLARGED FLOOR PLAN
 THE METROPOLITAN
 CEDAR RAPIDS, IOWA

UNIT 601
 AMENT PROJECT NUMBER: C4050.R0480



1

CONDO UNIT 501 & 504

SQUARE FOOTAGE: 2250 SF
DECK SQUARE FOOTAGE: 455 SF

CONDO UNIT 501 & 504 FLOOR PLAN
THE METROPOLITAN
CEDAR RAPIDS, IOWA

SHEET NO.
A1.5
OF -

FILE NAME
C4050_R0480

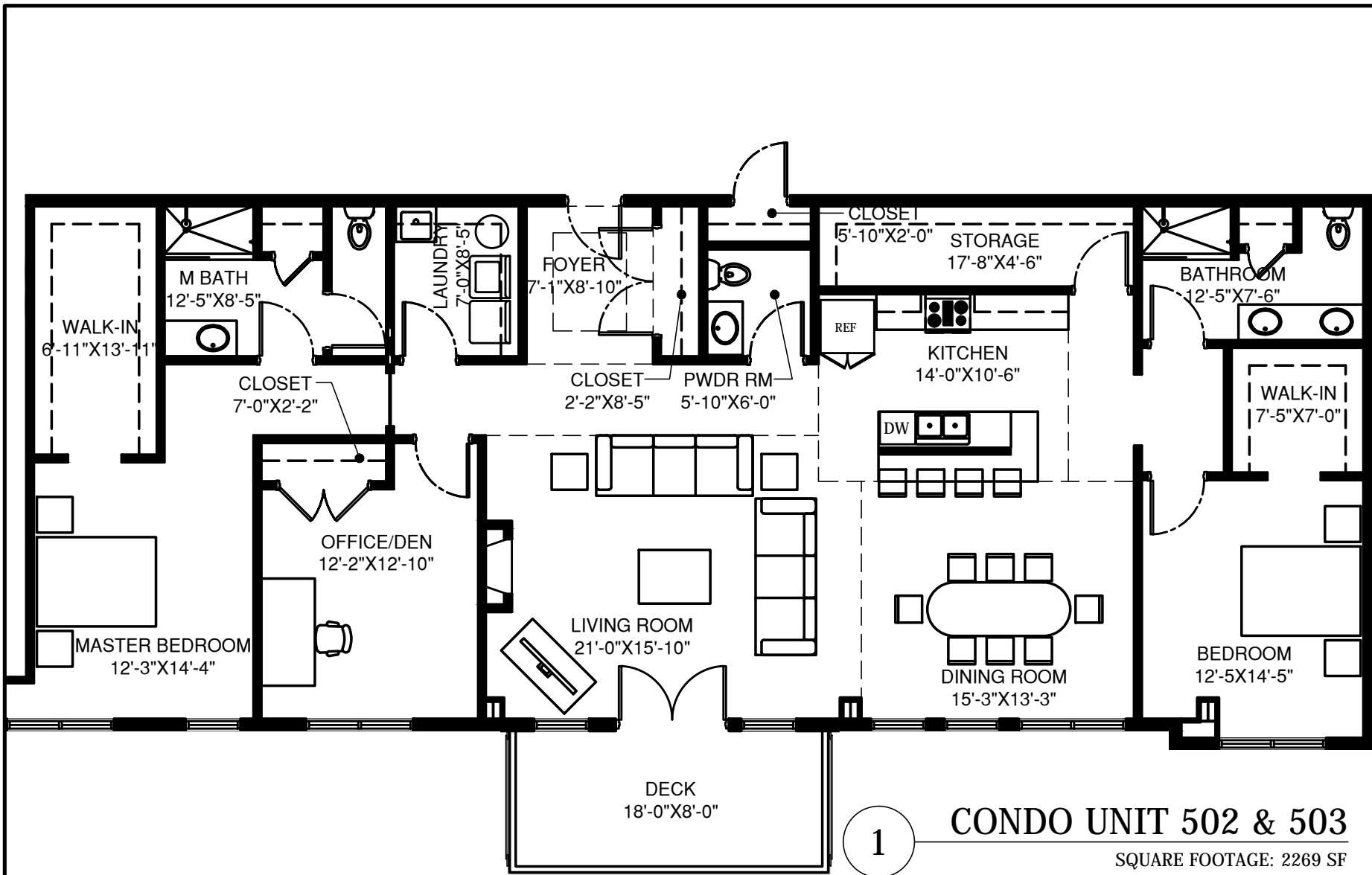
Ament
DESIGN

Ament Design
625 32nd Ave SW
Cedar Rapids IA 52404
ph. 319-378-1401
fax. 319-378-1775

DRAWN BY:
APPROVED BY:

SNJ
AMV3
ISSUE DATE:
09/19/2016

NOT FOR CONSTRUCTION



1

CONDO UNIT 502 & 503

SQUARE FOOTAGE: 2269 SF
 DECK SQUARE FOOTAGE: 144 SF

SNU
 AMV3
 09/19/2016

DRAWN BY:
 APPROVED BY:
 ISSUE DATE:

Ament Design
 625 32nd Ave SW
 Cedar Rapids IA 52404
 ph. 319-378-1401
 fax. 319-378-1775

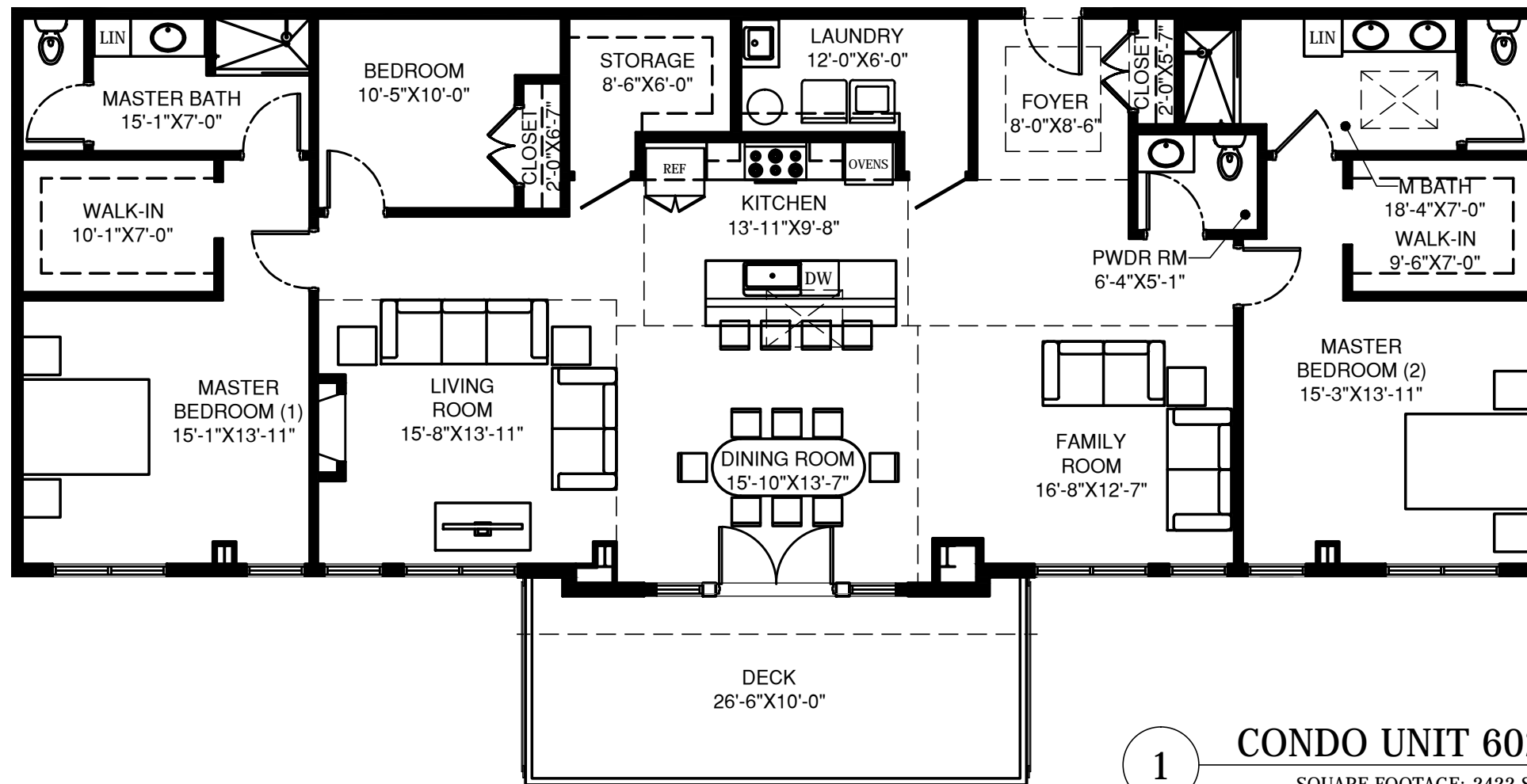
Ament
 DESIGN

CONDO UNIT 502 & 503 FLOOR PLAN
 THE METROPOLITAN
 CEDAR RAPIDS, IOWA

SHEET NO.
A1.5
 OF -

FILE NAME
 C4050_R0480

NOT FOR CONSTRUCTION



1 CONDO UNIT 602
 SQUARE FOOTAGE: 2422 SF
 DECK SQUARE FOOTAGE: 265 SF

NOT FOR CONSTRUCTION

DRAWN BY: <u>SNJ</u>	APPROVED BY: <u>AMV3</u>
DATE: <u>09/19/2016</u>	

NO.	REVISION DESCRIPTION	APPROVED	DATE

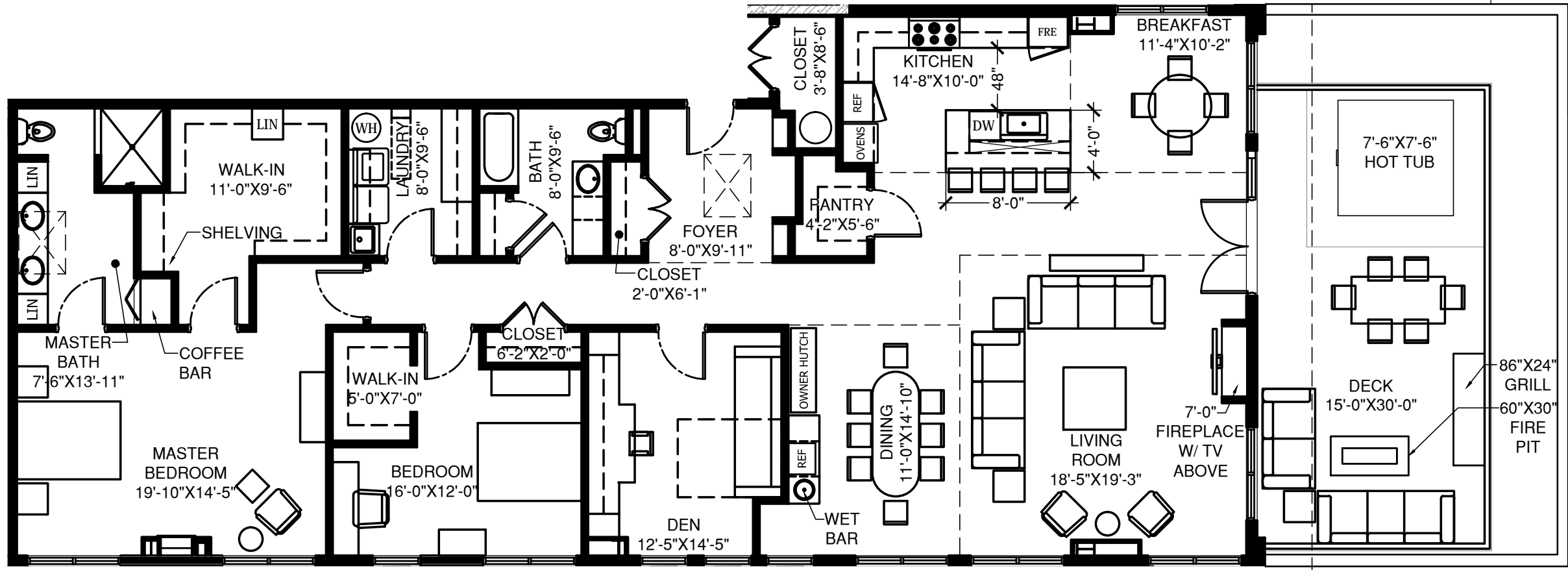
Ament
DESIGN

Ament Design
625 32nd Ave SW
Cedar Rapids IA 52404
ph. 319-378-1401
fax 319-378-1975

ENLARGED FLOOR PLAN
 THE METROPOLITAN
 CEDAR RAPIDS, IOWA

UNIT 602
 AMENT PROJECT NUMBER: C4050.R0480

SHEET NO.
A6
 OF



1 CONDO UNIT 603
 SQUARE FOOTAGE: 2586 SF
 DECK SQUARE FOOTAGE: 450 SF

NOT FOR CONSTRUCTION

DRAWN BY: <u>SNJ</u>	APPROVED BY: <u>AMV3</u>
DATE: <u>09/19/2016</u>	

NO.	REVISION DESCRIPTION	APPROVED	DATE

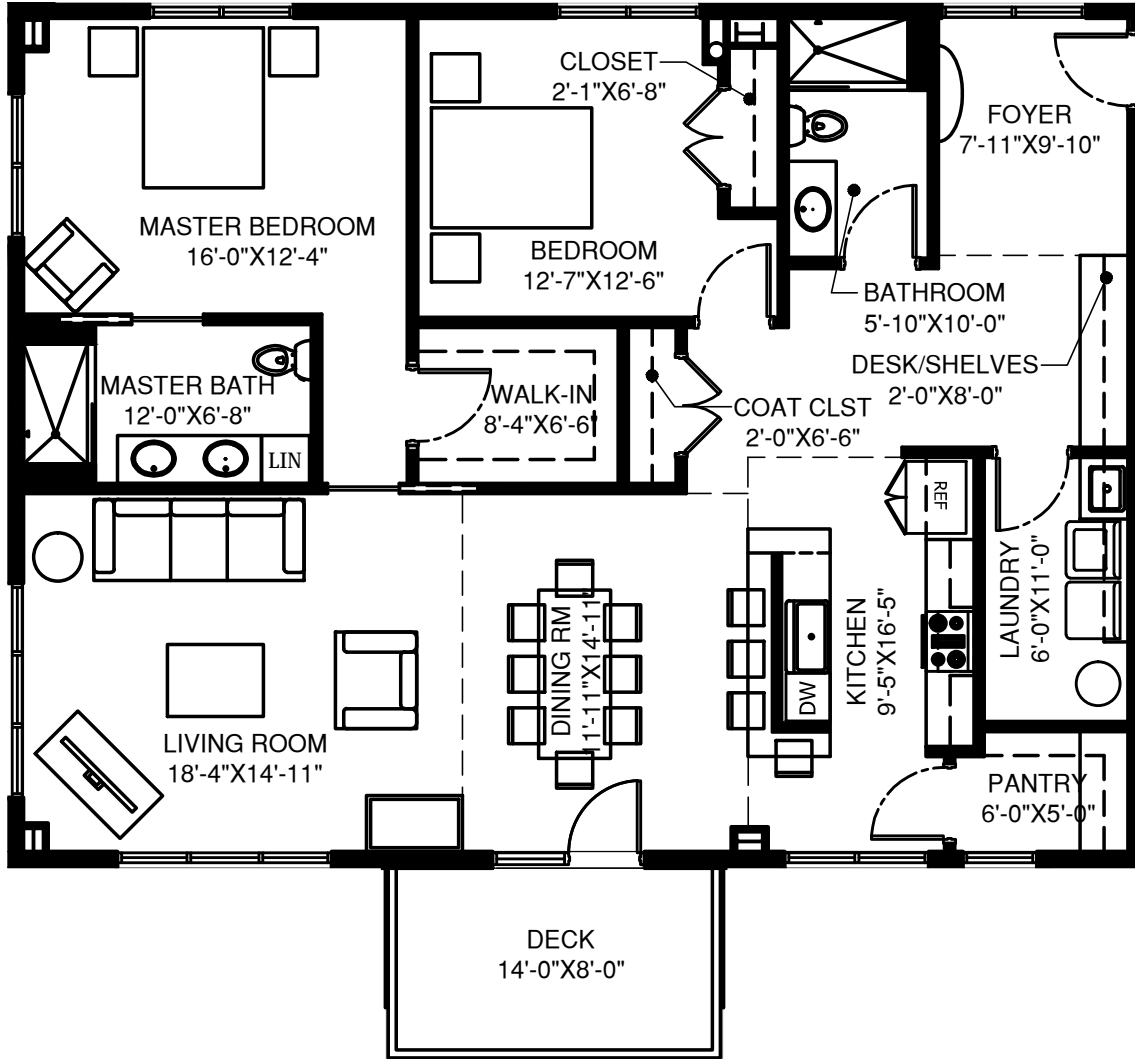
Ament
DESIGN

Ament Design
625 32nd Ave SW
Cedar Rapids IA 52404
ph. 319-378-1401
fax 319-378-1975

*ENLARGED FLOOR PLAN
 THE METROPOLITAN
 CEDAR RAPIDS, IOWA*

UNIT 603
 AMENT PROJECT NUMBER: C4050.R0480

SHEET NO.
A6
 OF



1

CONDO UNIT 401

SQUARE FOOTAGE: 1694 SF
 DECK SQUARE FOOTAGE: 112 SF

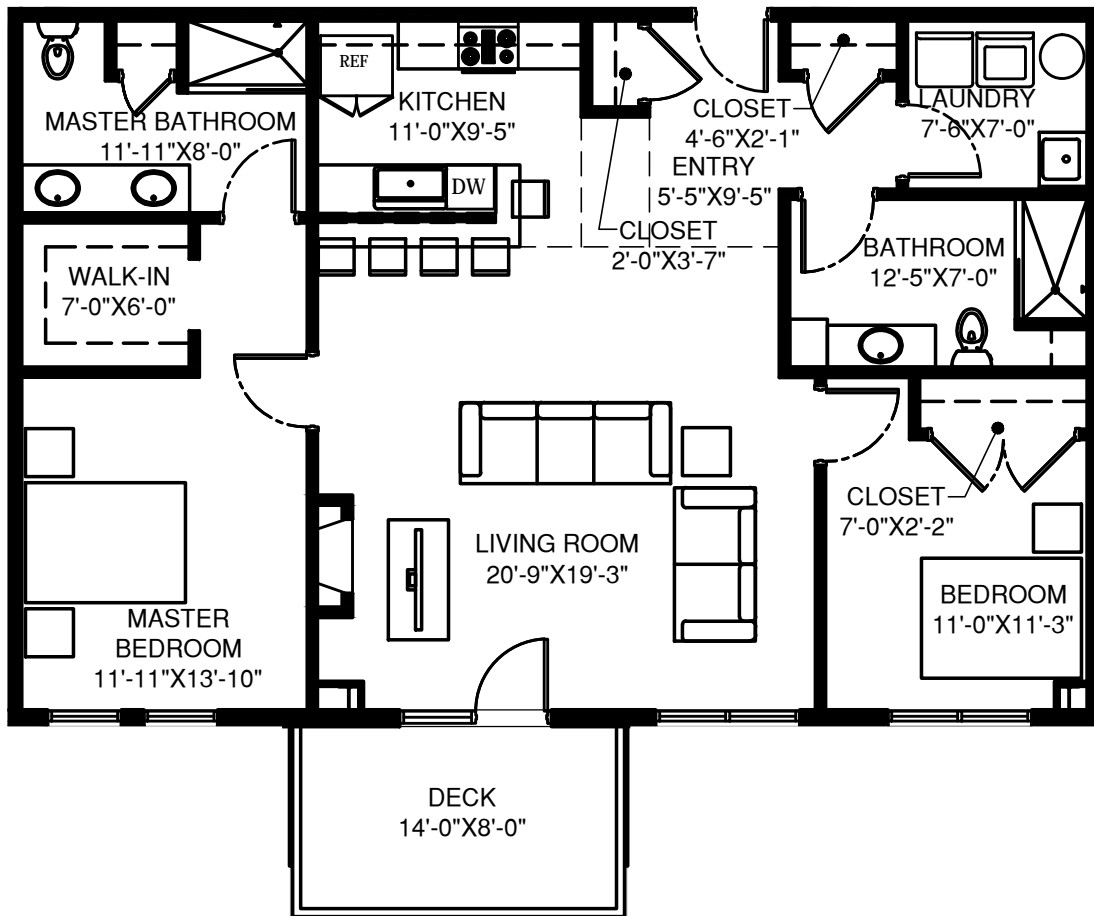
NOT FOR CONSTRUCTION

FILE NAME
 SHEET NO.
A1.4
 OF -

CONDO UNIT 401 FLOOR PLAN
 THE METROPOLITAN
 CEDAR RAPIDS, IOWA

Ament
 DESIGN
 Ament Design
 625 32nd Ave SW
 Cedar Rapids IA 52404
 ph. 319-378-1401
 fax 319-378-1975

DRAWN BY: SNJ
 APPROVED BY: AMV3
 ISSUE DATE: 09/19/2016



1 CONDO UNIT 402 & 405(OPP)

SQUARE FOOTAGE: 1350 SF
 DECK SQUARE FOOTAGE: 112 SF

NOT FOR CONSTRUCTION

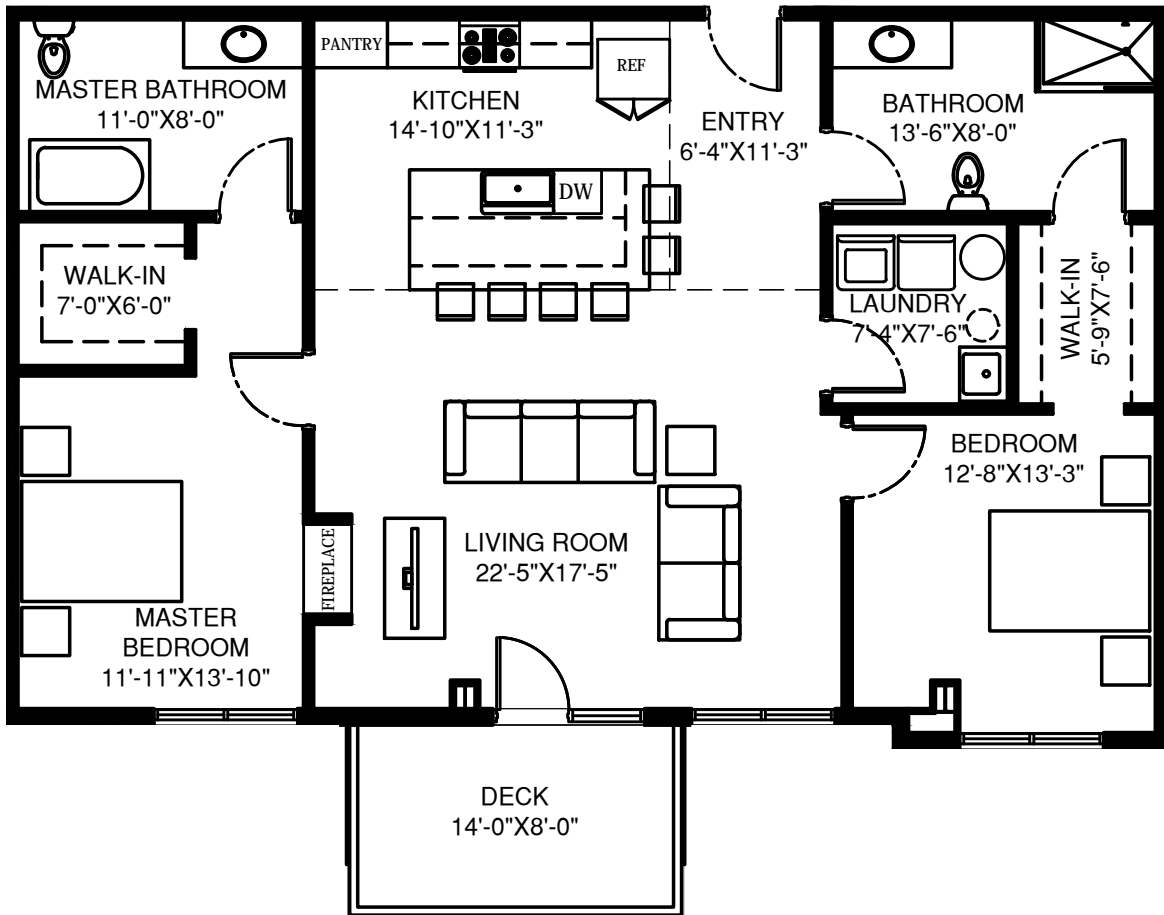
FILE NAME
 SHEET NO.
A1.4
 OF -

CONDO UNIT 402 & 405(OPP) FLOOR PLAN
 THE METROPOLITAN
 CEDAR RAPIDS, IOWA

Ament
 DESIGN

Ament Design
 625 32nd Ave SW
 Cedar Rapids IA 52404
 ph. 319-378-1401
 fax 319-378-1975

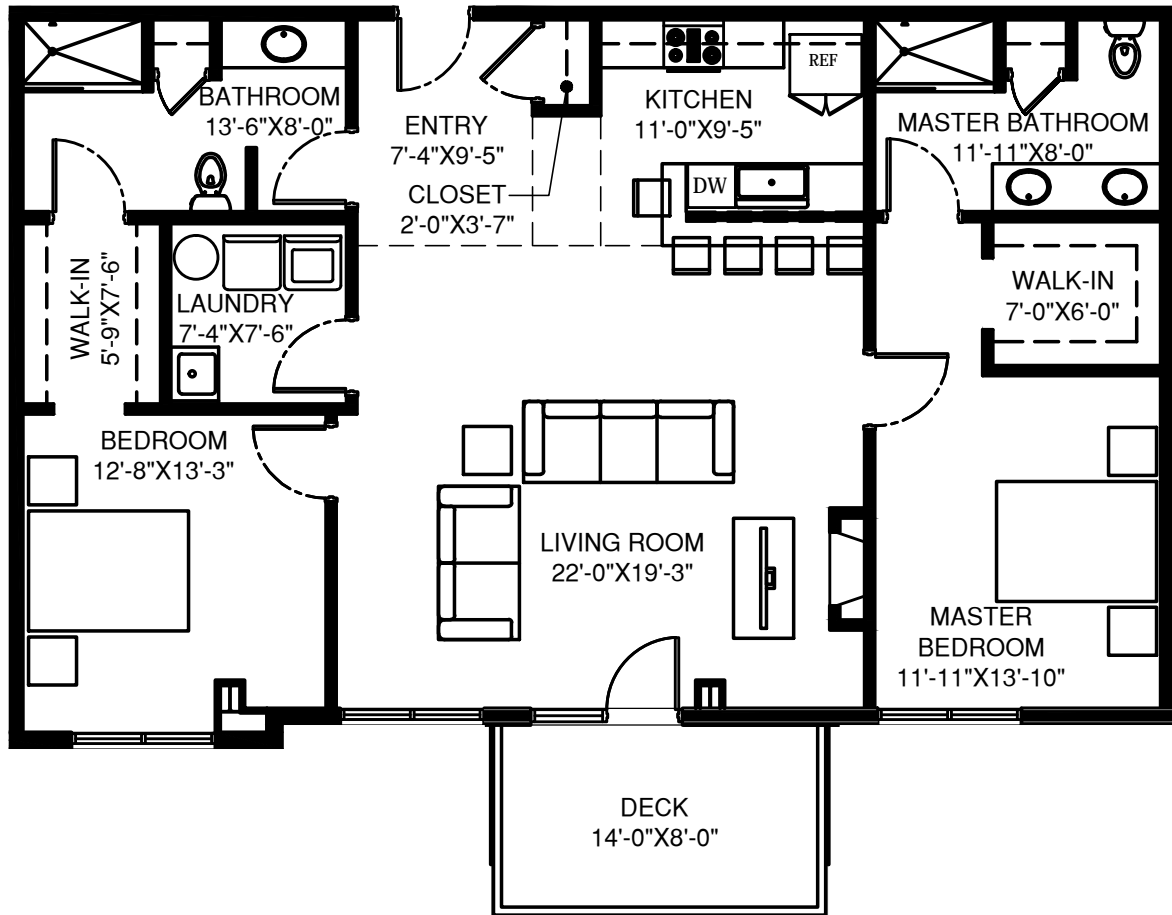
DRAWN BY: SNJ
 APPROVED BY: AMV3
 ISSUE DATE: 09/19/2016



1 CONDO UNIT 403
 SQUARE FOOTAGE: 1451 SF
 DECK SQUARE FOOTAGE: 112 SF

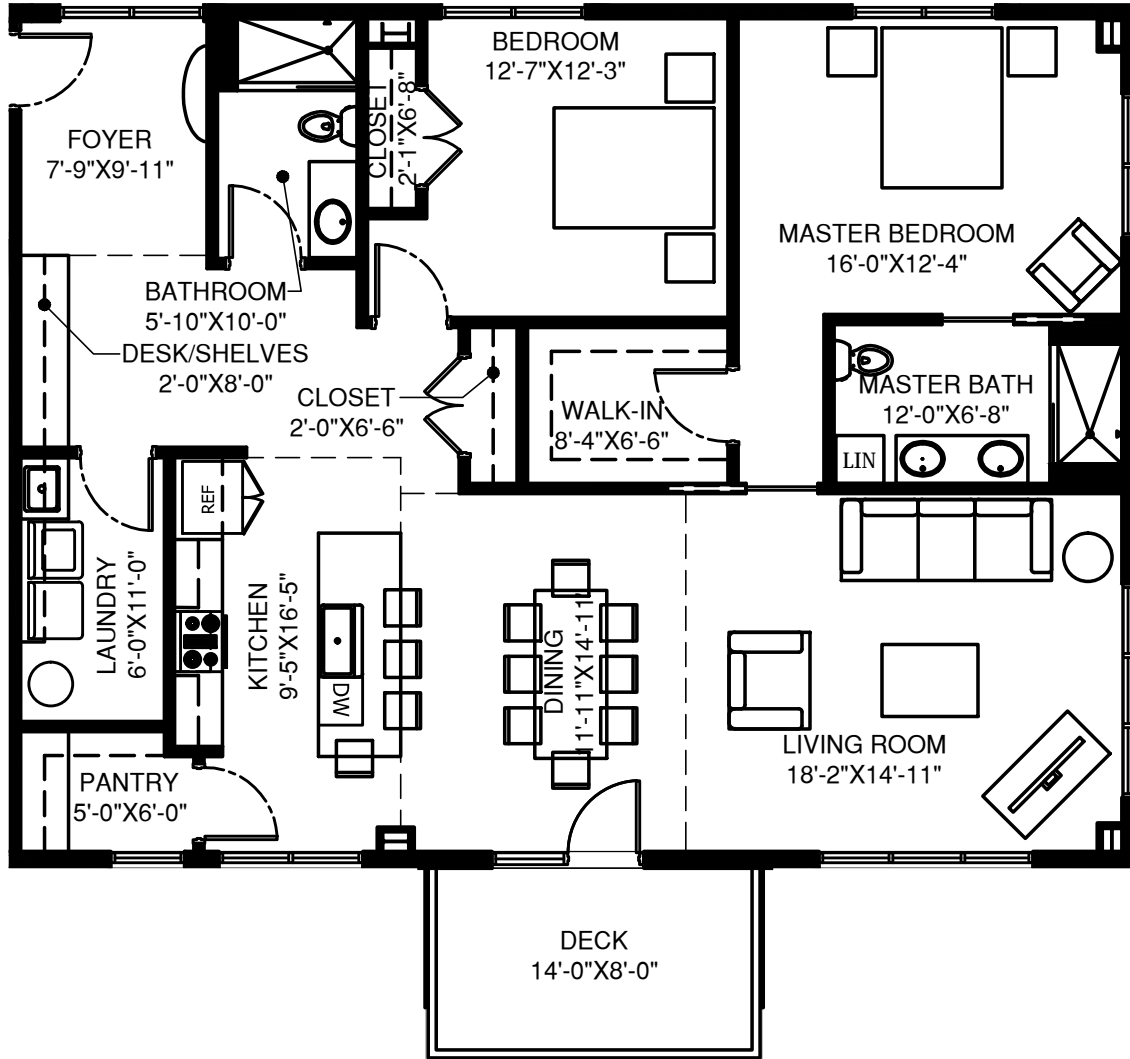
NOT FOR CONSTRUCTION

FILE NAME C:\0501\04030	SHEET NO.	CONDO UNIT 403 FLOOR PLAN THE METROPOLITAN CEDAR RAPIDS, IOWA	Ament DESIGN	Ament Design 625 32nd Ave SW Cedar Rapids IA 52404 ph. 319-378-1401 fax 319-378-1975	DRAWN BY:	SNJ
	A1.4 OF -				APPROVED BY:	AMV3



1 CONDO UNIT 404
 SQUARE FOOTAGE: 1451 SF
 DECK SQUARE FOOTAGE: 112 SF

NOT FOR CONSTRUCTION



1 **CONDO UNIT 406**
 SQUARE FOOTAGE: 1694 SF
 DECK SQUARE FOOTAGE: 112 SF

NOT FOR CONSTRUCTION

FILE NAME C:\0501\04060	SHEET NO. A1.4	CONDO UNIT 406 FLOOR PLAN THE METROPOLITAN CEDAR RAPIDS, IOWA		DRAWN BY: SNJ
	OF -			APPROVED BY: AMV3

Ament Design
 625 32nd Ave SW
 Cedar Rapids IA 52404
 ph. 319-378-1401
 fax 319-378-1975